

Genetics of kidney failure and the evolving story of APOL1

David J. Friedman, Martin R. Pollak

J Clin Invest. 2011;121(9):3367-3374. <https://doi.org/10.1172/JCI46263>.

Science in Medicine

Chronic kidney disease (CKD) results from a wide array of processes that impair the kidney's ability to perform its major functions. As many as 20 million Americans suffer from CKD and nearly a half million from end-stage renal disease, but there are also examples of centenarians with adequate renal function. Family-based and genome-wide studies suggest that genetic differences substantially influence an individual's lifetime risk for kidney disease. One emerging theme is that evolution of genes related to host defense against pathogens may limit kidney longevity. The identification of these genetic factors will be critical for expanding our understanding of renal development and function as well as for the design of novel therapeutics for kidney disease.

Find the latest version:

<https://jci.me/46263/pdf>





Genetics of kidney failure and the evolving story of APOL1

David J. Friedman^{1,2,3} and Martin R. Pollak^{1,3,4}

¹Nephrology Division, Department of Medicine, and ²Center for Vascular Biology Research, Beth Israel Deaconess Medical Center, Boston, Massachusetts, USA. ³Harvard Medical School, Boston, Massachusetts, USA. ⁴Broad Institute of Harvard and MIT, Cambridge, Massachusetts, USA.



Chronic kidney disease (CKD) results from a wide array of processes that impair the kidney's ability to perform its major functions. As many as 20 million Americans suffer from CKD and nearly a half million from end-stage renal disease, but there are also examples of centenarians with adequate renal function. Family-based and genome-wide studies suggest that genetic differences substantially influence an individual's lifetime risk for kidney disease. One emerging theme is that evolution of genes related to host defense against pathogens may limit kidney longevity. The identification of these genetic factors will be critical for expanding our understanding of renal development and function as well as for the design of novel therapeutics for kidney disease.

Introduction

Natural selection determines which genes are successfully transmitted to future generations, but the dramatic increase in the human lifespan over the past century has presented an unexpected challenge to our organ systems. The nearly half-million Americans with end-stage renal disease (ESRD), and many millions with chronic kidney disease (CKD), indicate that for many individuals, preservation of kidney function limits longevity (1). Increasing numbers of centenarians with adequate renal function suggests that some kidneys can outlast the upper limits of the current human lifespan. We can then ask why some kidneys fail after less than a decade, while others can span a century without signs of deterioration. The answer to this question has profound implications for understanding how the kidney works, finding treatments for renal diseases, and planning for an aging society.

CKD results from a wide array of processes that impair kidney function. While collapsing a multitude of specific diagnoses into the term "CKD" has clinical utility, it obscures the complexity of the diverse biological processes that cause decreased kidney function. We are beginning to recognize that many types of CKD have strong genetic components. In some cases, identical clinical syndromes may be caused by mutations in different genes. In other cases, seemingly distinct disease entities are driven by the same gene mutation. Identifying such genes can illuminate biological processes and overturn dogmas about disease pathogenesis. Connecting genetic variants with clinical entities will be a major goal in the years ahead.

Genetic diseases can be broadly classified as Mendelian or complex. Conceptually, Mendelian and common complex diseases lie at two ends of a spectrum represented by very rare but very highly penetrant variants on one end, and very common but poorly penetrant variants on the other. Evolutionary pressures may lead to variants and associated phenotypes that deviate from this pattern, with unusual combinations of frequency and effect size (2). Here, we briefly consider Mendelian and complex genetic variants leading to kidney failure and highlight one surprising example in this rarer category of common but powerful disease-causing genetic variants.

Mendelian kidney diseases may be surprisingly common

Polycystic kidney disease (PKD) is the best-known and most easily recognizable inherited kidney disease. It is seen frequently, not because of multiple common variants in the genome (each with small effect), but because the variants that cause PKD in the *PKD1* and *PKD2* genes are common for such highly penetrant mutations (Table 1). Most PKD patients develop kidney disease after the reproductive years, which explains why these variants are not rapidly eliminated from the population. Although PKD is the most common Mendelian genetic disease leading to kidney failure, penetrant *PKD* mutations are found on roughly 0.1% or fewer of all chromosomes (3).

Other Mendelian renal diseases are not so easily recognized. A common presentation in the nephrologist's office is the individual with mildly decreased kidney function and mild to moderate proteinuria, with or without hypertension. The nonspecific nature of this phenotype can obscure the genetic heterogeneity of the underlying diseases. For instance, family-based approaches have shown that point mutations in the *ACTN4*, *TRPC6*, and *INF2* genes can all lead to similar phenotypes characterized by progressive deterioration in renal filtration function and a pattern of injury known as focal segmental glomerulosclerosis (FSGS) (4–6). Mutations in any of these genes cause highly – but incompletely – penetrant autosomal-dominant disease. Although each of these mutations is individually rare, highly penetrant mutations in the known and unknown kidney disease genes taken together likely account for a nontrivial fraction of disease. Individually, these variants remain rare because they become apparent early in life and likely affect the number of offspring a patient will have, decreasing the probability that the variants will be transmitted.

Another clinically important, genetically heterogeneous entity is pediatric nephrotic syndrome, which has long been regarded as an immunologically mediated disease. The identification of defects in the *NPHS2* gene and its protein product, podocin, in patients with early-onset nephrotic syndrome demonstrated that abnormalities in the glomerular slit diaphragm can present similarly to immune nephropathies (7). As other slit diaphragm genes have subsequently been identified as the cause of related clinical presentations, we now suspect that some large fraction (20%–30%) of childhood steroid-resistant nephrotic syndromes result from structural and/or

Conflict of interest: The authors are named on a provisional patent for an *APOL1* genetic test.

Citation for this article: *J Clin Invest.* 2011;121(9):3367–3374. doi:10.1172/JCI46263.



Table 1

Rough numbers for three kidney phenotypes and three specific genetic loci found to influence these phenotypes

Phenotype	Gene variant example	Risk allele frequency	High-risk genotype frequency	Relative risk	Reference
CKD	<i>UMOD</i>	0.80	0.96 ^A	1.25 ^B	12
H-ESRD and FSGS	<i>APOL1</i>	0.33	0.11	7–10 ^C	44
PKD	<i>PKD1</i>	0.001 ^D ; negligible ^E	0.001 ^D ; negligible ^E	~1,000	3

^AHigh-risk genotypes combined. ^BAdditive model. ^CRecessive model. ^DFor any disease-causing mutation. ^EFor any one specific mutation.

signaling failure due to inheritance of two mutant copies of glomerular slit-diaphragm genes (8). Consequently, we have become less likely to treat these genetic diseases in children with immunomodulatory therapy (9).

Sequencing data of the 1000 Genomes Project indicate that each person carries 250–300 loss-of-function variants (10). Gain-of-function variants may also be common. This unexpectedly large number suggests that the fraction of kidney disease explained by individually rare variants may, in aggregate, also be greater than expected.

Identifying genetic factors in common forms of kidney disease

The high prevalence of kidney disease poses the question of whether common phenotypes result from rare genetic variants with large effects or from multiple common (but weak) genetic variants that influence disease in aggregate. Recent genome-wide association studies (GWASs) using estimated glomerular filtration rate (eGFR) as the phenotype of interest have identified several loci that may affect renal function (11, 12). The large number of individuals genotyped has afforded impressive statistical power to these studies, but effect sizes are quite modest, and the fraction of variance explained is very small. However, GWASs have identified some common variants in genes that also cause Mendelian disease. For instance, common variants in the uromodulin-encoding *UMOD* gene were strongly linked to effects on CKD and eGFR in recent GWASs (11, 12). Rarer variants in *UMOD* cause overlapping phenotypes described variously as medullary cystic kidney disease, interstitial nephritis, and familial juvenile hyperuricemic nephropathy (13, 14). The observation that the *UMOD* allele associated with increased risk of CKD also associates with higher uromodulin levels supports the notion that *UMOD* alleles may be etiologically related to, not just associated with, risk of CKD (15). Uromodulin appears to link innate to adaptive immunity in the urinary tract through TLR4 (16), suggestive of a role in defense against Gram-negative bacteria and perhaps explaining why the risk alleles are so common (80% in frequency). In contrast, for most common renal function SNPs identified in GWASs, functional consequences have not been demonstrated; in many cases, even the specific gene harboring the causal SNP is not known with certainty.

Although investigators are making progress toward identifying genetic variants associated with specific types of common kidney disease, few compelling loci have yet been pinpointed. Diabetic nephropathy is among the most common causes of renal disease in essentially every developed country (17). Dozens of SNPs for type 1 diabetes (18) and for type 2 diabetes (19) have been identified, but no genetic variants have been associated with diabetic nephropathy at the same level of significance. Larger GWASs may narrow this gap in knowledge. Diabetes itself is a heterogeneous disease poorly classi-

fied by the simplistic type 1 and type 2 labels, complicating diabetic nephropathy phenotypes. Furthermore, diabetes and diabetic kidney disease may have overlapping sets of genetic causes (e.g., inflammatory genes and insulin signaling genes), interfering with neat assumptions about the relationship between SNP and phenotype.

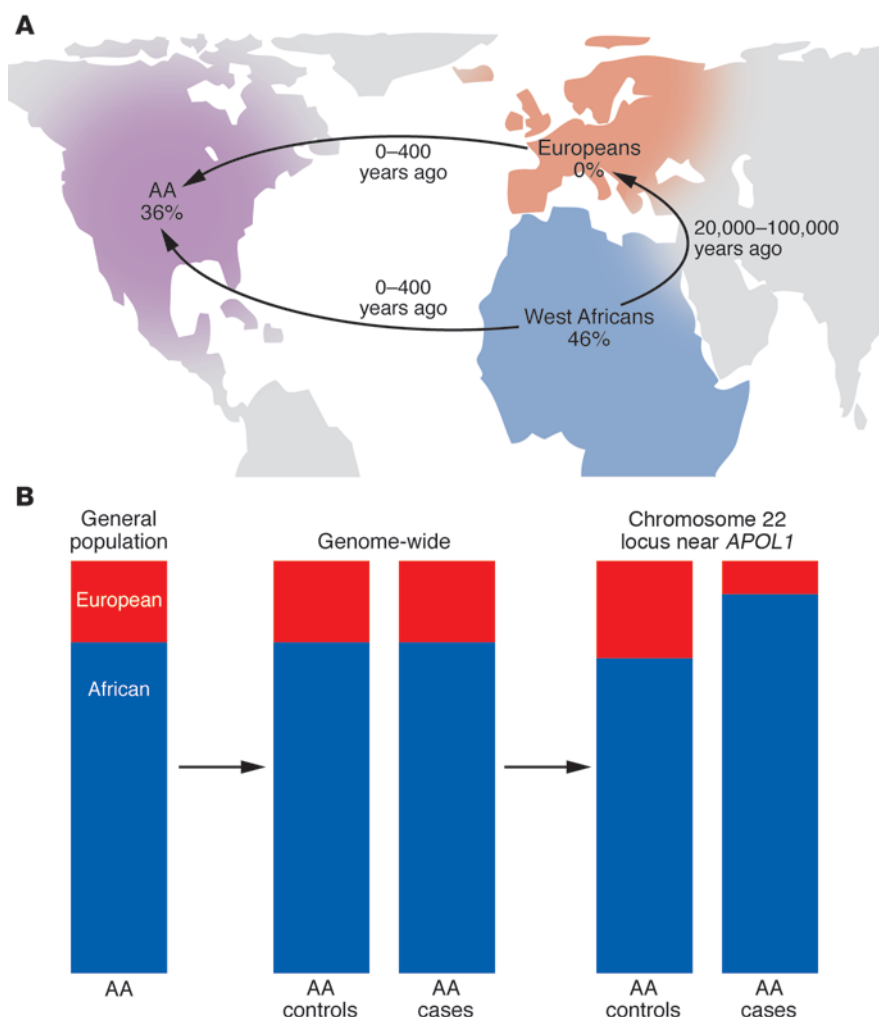
Although no loci for diabetic nephropathy have reached genome-wide significance to date, there are several potential candidates (20, 21). Different loci appear to be important for loss of GFR and for proteinuria, both considered cardinal features of diabetic nephropathy (22). The wide variety of pathologic injury seen on kidney biopsies in diabetic nephropathy is suggestive of multiple different mechanisms of injury, and each contributing pathway may have its own genetic susceptibility pattern. Still, familial clustering does exist for this disease, strongly pointing toward an identifiable genetic component (23). Any variants identified using larger cohorts will invariably have very small effect sizes, but may still identify important biological pathways. We suspect that progress will likely come from studies using much more refined phenotypes, for example examining physiologic processes such as early glomerular hyperfiltration or specific biopsy-defined parameters, rather than just larger and larger heterogeneous datasets.

Glomerulonephritis: the other side of immunity?

IgA nephropathy (IgAN), like FSGS, is a histologically defined form of glomerular injury that represents a collection of etiologically distinct entities. IgAN is defined by the presence of IgA deposits in the glomerular mesangium, typically in the setting of hematuria and proteinuria, often together with progressive decline in kidney function (24). Family-based studies have identified a small number of loci that appear to underlie highly penetrant forms of disease (25–27). A recent GWAS has identified loci in the MHC complex on chromosome 6p that reached genome-wide significance (28). A second, larger GWAS identified five loci, including three in the MHC and one that is probably explained by the deletion of two adjacent genes encoding the complement factor H-related proteins, CFHR1 and CFHR3 (29).

Heritability of abnormal IgA1 glycosylation suggests that the body’s handling of IgA is central to the mechanism of at least some forms of this condition and points to an intermediate phenotype that may aid in both disease classification and ongoing genetic investigation (30). The genetic relationship between the relatively rare familial forms of IgA nephropathy and the typical sporadic presentation is not known. The large ethnic and geographical differences in IgA nephropathy, such as its high prevalence in Asia, suggest that environmental factors may place different evolutionary pressures on the frequencies of IgAN-influencing alleles (31).

A recent GWAS for idiopathic membranous nephropathy, a less common disease (1 case per 100,000 individuals per year), revealed two robust associations with larger than typical effect sizes (32).

**Figure 1**

APOL1 risk variants: admixture and MALD. **(A)** *APOL1* risk variants arose approximately 4,000 years ago in Africa and rose quickly to high frequency. In Yoruba (Nigeria), approximately 46% of chromosomes contain either the G1 or G2 allele. The ancestors of modern Europeans left Africa many millennia before the origin of these risk alleles, so the risk alleles are not found in Europeans. Today, approximately 36% of all African Americans (AA) carry the G1 or G2 alleles. **(B)** MALD. In the US, African Americans have roughly 80% African ancestry and 20% European ancestry. Since African Americans have much more renal disease than European Americans, MALD tests for chromosomal regions in African Americans with renal disease (cases) that are disproportionately African in origin. Genome-wide, there is no excess African ancestry in renal disease cases. However, at the chromosome 22 locus, there is a marked excess of African ancestry in cases. The odds of this distribution by chance alone are several billion to one (41, 42).

Common SNPs at *HLA-DQA1* and *PLA₂RI* both demonstrated strong signals, and surprisingly, the allelic effects of the two SNPs appear to be multiplicative, potentially indicating a common mechanism of pathogenesis (33). The association for *PLA₂RI* is particularly exciting, because it confirms suggestive results from small candidate gene studies (34, 35) as well as substantive biological evidence that *PLA₂RI* is an autoantigen in many individuals with membranous nephropathy (36). *PLA₂RI* encodes the M-type phospholipase A2 receptor, whose ligand (sPLA2) is active in immune defense against bacteria (37, 38), raising the possibility that natural selection may have influenced the frequency of disease-associated SNPs in *PLA₂RI*.

Kidney disease in individuals of African descent

African Americans have 4- to 5-fold more kidney failure than European Americans (1). Although old reports have hinted at this disparity for some time, it was neither widely appreciated nor reliably quantified until relatively recently (39, 40). Furthermore, the phenomenon remains poorly characterized. Do we mean African Americans per se, or any individual with recent African ancestry? Does regional African ancestry matter (i.e., Kenya versus Nigeria)? And how do we define kidney failure, given that so many people with kidney dysfunction die of other related cardiovascular diseases, rather than from ESRD itself?

Large differences in disease prevalence between two ancestral groups (even if highly heterogeneous, such as Africans and Europeans) suggest that relatively common genetic variants must account for these differences. It would be statistically unlikely and biologically implausible for many different rare, independent variants in *TRPC6*, *ACTN4*, *NPHS2*, and other kidney disease genes to all be more common in African Americans than European Americans.

In 2008, two studies took advantage of this disparity in renal disease prevalence to demonstrate that a locus on chromosome 22 conferred most or nearly all of the increased risk for nondiabetic kidney disease in African Americans (41, 42). Mapping by admixture linkage disequilibrium (MALD) uses differences in allele frequencies between populations with differing susceptibility to disease to determine chromosomal regions that are likely to harbor disease-causing genes (reviewed in ref. 43). A large excess of African ancestry among African Americans with either FSGS, hypertension-associated ESRD (H-ESRD), or HIV nephropathy (HIVAN) at this single locus on chromosome 22 (Figure 1) confirmed a genetic basis for the observed ancestry-related disparity in renal disease prevalence. Initial studies suggested that the disease-causing variants might be located in the *MYH9* gene, but fine mapping and sequencing did not identify any convincing causal variants.

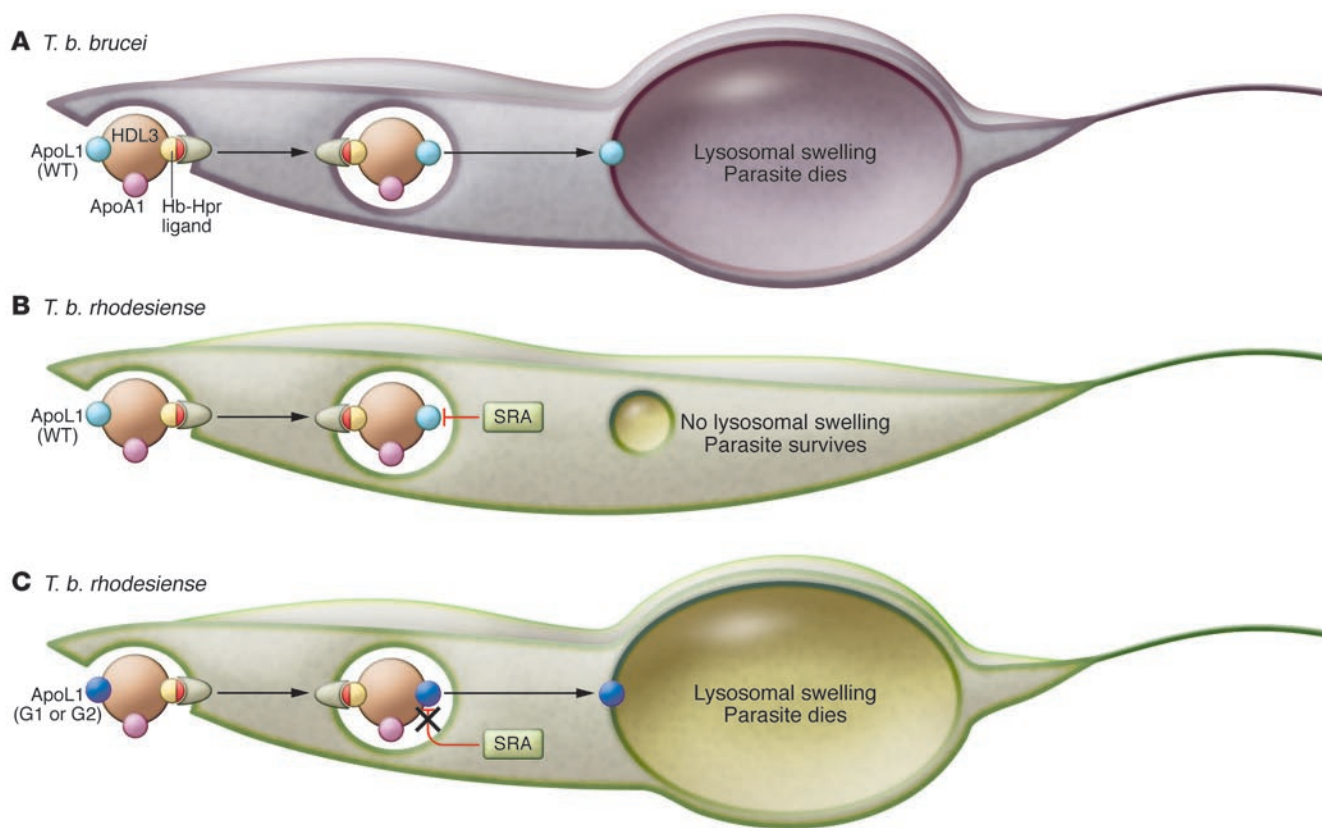


Figure 2

ApoL1 circulates as part of the HDL3 complex, which includes hemoglobin and haptoglobin-related protein. (A) In one current model, the ApoL1-containing complex is taken up by *T. b. brucei* via a receptor that binds hemoglobin and haptoglobin-related protein (Hb-Hpr). ApoL1 traffics to the trypanosomal lysosome, where the acidic pH causes a conformational change, leading to activation of anion channel function in the ApoL1 N terminus. Lysosomal swelling kills the trypanosome. Thus, ApoL1 confers innate immunity against this parasite. (B) Over time, *T. b. brucei* developed a virulence factor called SRA that can inactivate ApoL1 protein, although the cellular location of this interaction is unknown. These SRA-expressing trypanosomes evolved into *T. b. rhodesiense*, the etiologic agent that causes acute African sleeping sickness (57, 58). (C) The kidney disease–associated G1 and G2 variants encode forms of ApoL1 that evade SRA and remain active against *T. b. rhodesiense*. This, and/or other biological effects, may have conferred a selective advantage to G1 and G2 heterozygotes, causing a selective sweep. Figure adapted with permission from *Current Opinion in Immunology* (67).

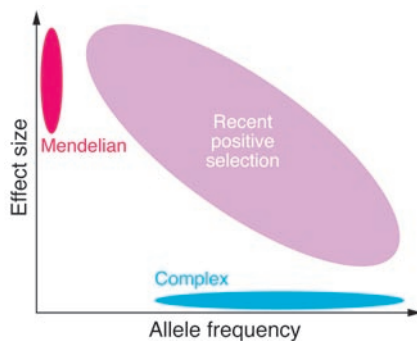
In the case of the chromosome 22 region identified by MALD, the size of the nephropathy-associated haplotype containing the risk alleles is considerably longer than the haplotypes of the non-risk alleles (44). The unusual length of this risk haplotype suggests the occurrence of a selective sweep: natural selection may have favored the renal risk allele for some advantage it conferred or favored another allele in close linkage disequilibrium (LD) with the renal risk allele. The implication is that natural selection swept the renal disease risk allele to high frequency despite its potentially deleterious effects. The presence of a selective sweep also led to an initial underestimate of the size of the risk interval (41, 42). Factoring in the long haplotypes that are associated with selective sweeps, the risk interval could then be expanded beyond *MYH9* to include the apolipoprotein L (*APOL*) family of genes.

APOL1

The 1000 Genomes Project aims to catalog genetic variations in diverse human populations (45). Although there are many genetic variants with large differences in allele frequency between native west Africans and Europeans at the chromosome

22 locus, two particular coding sequence variants in *APOL1* – not cataloged in HapMap, but identified in 1000 Genomes data – demonstrated by far the strongest association with kidney disease in African Americans (44, 46). Importantly, these S342G and I384M substitutions (in almost complete LD; referred to as G1) and a deletion of two amino acid residues, N388 and Y389 (referred to as G2), alter the amino acid sequence of the encoded ApoL1, which suggests functionality. While identified initially by testing African Americans with FSGS, a similarly strong effect on the risk of H-ESRD was also demonstrated. In these initial studies, individuals with one risk allele (G1 or G2) have no or only minimally increased kidney disease risk. However, individuals with two risk alleles (one on each chromosome) have 7- to 10-fold increased risk of FSGS and H-ESRD. Thus, *APOL1*-mediated kidney disease risk follows essentially autosomal-recessive inheritance, unlike most common complex disease variants that follow additive or multiplicative patterns.

The G1 and G2 alleles are common; on the order of 50% of African American individuals have either one or two risk alleles, and 10%–15% have two risk alleles (44). The unusually large effect size,

**Figure 3**

Effect size versus allele frequency. For genetic variants influencing human traits, effect size tends to vary inversely with allele frequency. As a rule, Mendelian diseases are caused by extremely rare variants (including unique mutations) with very large effect size (~1,000-fold), whereas most analyses of complex traits to date by GWAS have led to the identification of common genetic variants with individually small effect (typically less than 2-fold; in most reports to date, just slightly above 1). In contrast, variants on which recent positive selection has been acting may become more common than expected and still have large effect size. The disorders caused by mutations in *HBB* (such as sickle cell disease) and *APOL1*-associated kidney disease are examples of this phenomenon.

high frequency, and recessive mode of inheritance raises the question of whether *APOL1*-mediated renal disease in African Americans is more accurately characterized as a Mendelian disease with important modifiers rather than as a complex disease.

APOL1 influences the risk of different forms of kidney disease

The G1 and G2 *APOL1* variants exert similar magnitudes of effect on the risk of both FSGS and H-ESRD (44). This observation suggests that a common mechanism may be a major factor in these two disease entities, as some clinicians have long suspected. That the effect size is so large for both diseases may mean that the overlap in etiology is quite substantial. This difference between H-ESRD and FSGS likely reflects, at least in part, the timing of clinical evaluation, the presence of modifier genes (or epistatic effects), and perhaps the nature of environmental exposures.

The *APOL1* genotype may prove to be an even stronger factor in HIVAN than FSGS or H-ESRD, with odds ratios estimated to be as high as 30. HIVAN is characterized by marked proteinuria and, often, an aggressive histologic lesion referred to as collapsing nephropathy, in which FSGS is accompanied by podocyte proliferation and the appearance of collapsed glomerular capillaries (47). Widely observed to be much more common in black individuals (48–50), the overwhelming association with the chromosome 22 locus provides a genetic explanation for this difference. Rates of HIVAN in Africa correlate with frequency of chromosome 22 risk phenotypes (46, 51, 52). If the assumption is correct that H-ESRD, FSGS, and HIVAN share a common etiology, a logical implication is that hypertension may not in fact lead to ESRD in the vast majority of cases diagnosed as hypertensive nephrosclerosis. Rather, hypertension-associated kidney disease (or hypertensive nephropathy, hypertensive nephrosclerosis, or whatever synonym one chooses) may be primarily a renal syndrome that precedes and potentially causes hypertension. This hypothesis will be difficult to prove, but has major implications for treatment of both renal disease and hypertension.

The origins of APOL1 renal risk variants

It is interesting to consider how *APOL1* renal risk variants rose to such high frequency in individuals of African descent. Hemoglobinopathies, paradigmatic examples of an evolutionary compromise, may afford some insight. In malaria-endemic parts of the globe, numerous variants in the hemoglobin gene are observed at high frequency (53, 54). Whereas two copies of variant hemoglobins lead to several well-defined human disorders (e.g., sickle cell disease and the thalassemias), individuals with one copy develop

less severe malarial disease. The frequency of sickle cell allele in hemoglobin (*HbS*) varies greatly, globally and within Africa, in relation to the historical endemicity of malaria. Recent evidence suggests that the allele arose independently multiple times in history, as *HbS* is found on several different haplotype backgrounds (55, 56). The survival advantage conferred by the *HbS* allele (a dominant trait) caused it to increase in frequency until the recessive disease became common.

The biology and genetics of *APOL1* tell a similar evolutionary story. Circulating ApoL1 can lyse *Trypanosoma brucei* and various other trypanosoma, and this innate immune function protects humans against the trypanosomes that infect cattle and other animals. While humans are resistant to *T. brucei* because of the presence of ApoL1, a subspecies of this parasite emerged (*T. brucei rhodesiense*) that is entirely resistant to ApoL1-mediated lysis (57). A *T. b. rhodesiense* virulence factor called SRA confers this resistance, inactivating ApoL1 by binding its C terminus and preventing parasite lysis (58). ApoL1 protein harboring G1 and G2 variants, located at the site of the ApoL1/SRA interaction, can escape SRA-mediated inactivation, providing a (dominant) selective advantage for these variants (ref. 44 and Figure 2). Two copies of variant ApoL1 greatly increase risk of renal disease in a recessive fashion, although the penetrance is clearly lower than that for sickle cell disease. Presumably, in areas with high sleeping sickness burdens, variant *APOL1* frequency tends to rise until homozygotes become relatively common. In the US and other non-African locales, where there is no apparent selective advantage to variant ApoL1, we see only the deleterious consequences.

Traces of natural selection in the human genome

The hypothesis that *APOL1* renal risk variants were selected for their advantageous properties in the recent past (<10,000 years) is supported by patterns of genetic variation among modern humans. In general, a new mutation occurs once at a specific locus and remains rare or disappears. The vagaries of population bottlenecks, human migration, mating preferences, and other variables may cause new mutations to reach substantial frequencies in some population groups (referred to as *genetic drift*) independent of any specific consequences of that mutation (2, 59). This increase in allele frequency takes time; therefore, if an allele becomes common as a result of drift, it is likely very old. Variant alleles that are common in Europeans, Africans, and Asians originated at least 50,000–100,000 years ago, before modern humans migrated out of Africa. If, however, a new mutation confers a selective advantage, it can reach high frequency in a specific population much more rapidly (known as a *selective sweep*) than expected by drift alone. A recently selected allele that rises rapidly in frequency will tend to



be on a longer haplotype than the nonselected allele at that locus (60). Long haplotype tests for positive selection compare the length of the selected allele's haplotype with the haplotype length of the alternate allele (60). In the case of the G1 and G2 *APOL1* haplotypes, these calculations give strong statistical support for positive selection acting on these alleles over the last 3,000–10,000 years in Africa. Because these DNA changes developed in sub-Saharan Africa after the out-of-Africa migrations of 20,000–100,000 years ago, they are exceedingly rare or nonexistent among people without recent African ancestors (e.g., last few millennia) (44).

Some disease-causing mutations in kidney disease genes occur at very highly conserved loci. For example, the glutamic acid that constitutes residue 255 in human α -actinin-4 (*ACTN4*) is a glutamic acid in the mouse, yeast, and *Drosophila* homologs (5). It is not surprising that a nonconservative amino acid substitution at this residue alters this protein's function, leading to human disease (5). In contrast to *ACTN4* and a number of other Mendelian kidney disease genes, the *APOL* family of genes is relatively new and rapidly changing in response to environmental pressure. Humans have six *APOL* genes, arranged in a cluster on chromosome 22 (61). *APOL1* is a recently evolved member with a limited distribution in the animal kingdom, existing only in humans and a few other primate species (62). For new or nonconserved genes like *APOL1*, disease-causing variants might be thought of quite differently, with changes in these genes influencing specifically primate — and perhaps uniquely human — phenotypes.

Many puzzles

Although we believe that these two *APOL1* variants explain the high rate of kidney disease in African Americans and have risen to high frequency because of a selective advantage that resistance to pathogens has conferred, several puzzles remain to be solved. The renal risk alleles appear to be most common in western sub-Saharan Africa, whereas *T. b. rhodesiense* is currently endemic in eastern Africa. It is conceivable that distributions of trypanosomes have changed over time, or even that the very high frequency of trypanolytic *APOL1* variants in West Africa may have altered trypanosomal distributions through herd immunity. *T. b. rhodesiense* may not be the only factor driving natural selection; a second trypanosomatida, *Leishmania*, is also targeted by *APOL1* (63). It is certainly possible that ApoL1 has broad innate immunity properties, shaping the relative frequencies of the *APOL1* alleles. Just as mysterious are the biological mechanisms by which these variants lead to human kidney disease. Many reasonable hypotheses can be generated regarding the effect of either circulating or intracellular *APOL1* on kidney function. Based on what little is known about ApoL1 biology beyond its antitrypanosomal effect, roles in apoptosis, autophagy, ion channel function, and lipid biology could all be important for kidney function in health and disease. Both extensive deep sequencing and kidney-specific functional evidence will be critical in validating and understanding the role of ApoL1 in kidney pathophysiology.

Clinical implications

The presence of two *APOL1* high-risk variants is not sufficient to cause disease. It is highly likely that other genetic and environmental factors with highly variable frequencies modify the penetrance and expressivity of the *APOL1* genotype. However, the unusually large relative risk associated with this genotype suggests that there may eventually be value in regarding *APOL1*-mediated renal disease

as a distinct clinical entity. CKD presenting in a middle-aged African American individual is more likely than not associated with this high-risk (two-allele) *APOL1* genotype. On the other hand, the likelihood that this genotype is present depends heavily on the specifics of an individual's ancestry. The frequency of the *APOL1* risk alleles is essentially zero in Ethiopia, which likely explains the rarity of HIV-associated nephropathy in this population (52). Americans of Ethiopian descent, therefore, are not expected to be at high risk of kidney disease from H-ESRD or FSGS, either. At present, the specifics of how *APOL1* genotype should alter clinical care are unknown and deserving of study. It will be important for clinical studies to determine whether any treatment aimed at slowing either kidney disease progression or the underlying disease process will have different efficacy in individuals with or without *APOL1* risk alleles.

Implications for understanding health disparities

If we are to reduce major disparities in the rates of serious disease between different ethnic or racial groups (however poorly defined these categories may be), we need to understand the genetic and environmental bases of these disparities. In the case of kidney disease, this means rethinking several widely held beliefs. It is too imprecise, and in some cases misleading, to say that African Americans as a group have 4-fold more kidney disease than European Americans. It is somewhat more accurate to say that a subset of black individuals has a 7- to 30-fold increase in kidney disease, depending on the specific kidney phenotype in question. It is better yet to point to the two common coding sequence variants in *APOL1* that arose recently in Africa as the cause of these renal diseases, an approach that may benefit the specific individual. As we come to better understand how these variants have spread through populations throughout the globe, we should see a wider appreciation of the fact that neither skin color nor generalizations about ancestry are good predictors of kidney disease for an individual patient.

Implications for new kidney gene discovery

Recently selected kidney disease variants will have different properties than do rare, Mendelian disease genes or common, complex disease genes (Figure 3). Common variants are generally weak, and Mendelian variants are rare, but genes under strong positive selection provide a unique instance in which a variant can have an unusual combination of frequency and penetrance. Many of these variants are unlikely to be widely shared by diverse populations. Any variant common among Europeans, Africans, and Asians is greater than 50,000 years old, occurring before the out-of-Africa migration (64). Mutations with powerful deleterious consequences are eliminated over time if positive selection pressure is relaxed, so it is unlikely that many variants with large effect sizes could persist at high frequencies in environments as different as Europe, Africa, and Asia over a thousand generations. Thus, we should not dismiss the existence of other common, highly penetrant variants, such as *APOL1* risk alleles, but rather expect them to be found mostly in specific populations. It is also thought provoking that the genes with the best evidence for association with kidney disease — *APOL1*, *UMOD*, *PLA2R1/sPLA2*, complement factors, and the *MHC* loci — all appear to be important in defense against pathogens.

A second issue raised by *APOL1* genetics is the role of animal models of kidney disease for understanding human kidney disease. *APOL1* is a gene found only in humans and a few primate species, such as baboons and gorillas; not even chimpanzees have functional



APOL1 (62). The human glomerulus, especially the podocyte, is a highly differentiated structure that must endure many physical stresses and toxic insults over many decades, with little apparent capacity for replacement. It is tempting to speculate that *ApoL1* may play some role in maintaining the integrity of the glomerulus over a lifetime, especially given its putative role in autophagy and the recently appreciated importance of autophagy for podocyte health (65, 66). The major role of *APOL1* variants in human kidney disease does highlight a case in which rodent models are better suited to disease gene validation and mechanistic understanding than to kidney disease gene discovery.

Future challenges

New technologies and approaches will revolutionize how we connect genotypes and phenotypes for kidney disease. Exome sequencing has already led to identification of genes for rare diseases in families and has the potential to do the same for common diseases as costs decrease. Detailed and thoughtful phenotyping by clinicians will be more important than ever in refining cohorts for analysis. Epigenetic changes and gene-environment interactions represent additional exciting avenues for investigation.

Genetics, as a research discipline, provides insight into biologic mechanisms underlying phenotypic diversity as well as basic biology, physiology, and development. Some challenges, such as understanding mechanisms by which variants in a noncoding sequence of unclear function influence phenotype, will be exceedingly difficult. The discovery of surprising new mechanisms by which DNA sequence regulates cellular function continue to point to much greater complexity in the genome than was entertained just a few years ago. Identification of disease-associated variants will always represent a beginning, not an end, for genetic studies. Discovering how these gene variants cause disease is at least as important as their identification on the path to better methods of treatment and prevention. It will be exciting to watch our understanding of kidney disease evolve.

Address correspondence to: Martin Pollak or David Friedman, Beth Israel Deaconess Medical Center, 330 Brookline Avenue, Boston, Massachusetts 02115, USA. Phone: 617.667.0461; Fax: 617.667.0495; E-mail: mpollak@bidmc.harvard.edu (M. Pollak). Phone: 617.667.0253; Fax: 617.667.0495; E-mail: dfriedma@bidmc.harvard.edu (D. Friedman).

1. US Renal Data System. *USRDS 2009 annual data report: atlas of chronic kidney disease and end-stage renal disease in the United States*. Bethesda, Maryland, USA: National Institutes of Health, National Institute of Diabetes and Digestive and Kidney Diseases; 2009.
2. Mitchell-Olds T, Willis JH, Goldstein DB. Which evolutionary processes influence natural genetic variation for phenotypic traits? *Nat Rev Genet*. 2007;8(11):845–856.
3. Harris PC, Torres VE. Polycystic kidney disease. *Annu Rev Med*. 2009;60:321–337.
4. Winn MP, et al. A mutation in the TRPC6 cation channel causes familial focal segmental glomerulosclerosis. *Science*. 2005;308(5729):1801–1804.
5. Kaplan JM, et al. Mutations in *ACTN4*, encoding alpha-actinin-4, cause familial focal segmental glomerulosclerosis. *Nat Genet*. 2000;24(3):251–256.
6. Brown EJ, et al. Mutations in the formin gene *INF2* cause focal segmental glomerulosclerosis. *Nat Genet*. 2010;42(1):72–76.
7. Boue N, et al. *NPHS2*, encoding the glomerular protein podocin, is mutated in autosomal recessive steroid-resistant nephrotic syndrome. *Nat Genet*. 2000;24(4):349–354.
8. Ruf RG, et al. Patients with mutations in *NPHS2* (podocin) do not respond to standard steroid treatment of nephrotic syndrome. *J Am Soc Nephrol*. 2004;15(3):722–732.
9. Buscher AK, et al. Immunosuppression and renal outcome in congenital and pediatric steroid-resistant nephrotic syndrome. *Clin J Am Soc Nephrol*. 2010;5(11):2075–2084.
10. Durbin RM, et al. A map of human genome variation from population-scale sequencing. *Nature*. 2010;467(7319):1061–1073.
11. Kottgen A, et al. Multiple loci associated with indices of renal function and chronic kidney disease. *Nat Genet*. 2009;41(6):712–717.
12. Kottgen A, et al. New loci associated with kidney function and chronic kidney disease. *Nat Genet*. 2010;42(5):376–384.
13. Bleyer AJ, Zivna M, Knoch S. Uromodulin-associated kidney disease. *Nephron Clin Pract*. 2011; 118(1):c31–36.
14. Hart TC, et al. Mutations of the *UMOD* gene are responsible for medullary cystic kidney disease 2 and familial juvenile hyperuricaemic nephropathy. *J Med Genet*. 2002;39(12):882–892.
15. Kottgen A, et al. Uromodulin levels associate with a common *UMOD* variant and risk for incident CKD. *J Am Soc Nephrol*. 2010;21(2):337–344.
16. Saemann MD, et al. Tamm-Horsfall glycoprotein links innate immune cell activation with adaptive immunity via a Toll-like receptor-4-dependent mechanism. *J Clin Invest*. 2005;115(2):468–475.
17. Williams ME. Diabetic CKD/ESRD 2010: a progress report? *Semin Dial*. 2010;23(2):129–133.
18. Hakonarson H, Grant SF. Genome-wide association studies in type 1 diabetes, inflammatory bowel disease and other immune-mediated disorders. *Semin Immunol*. 2009;21(6):355–362.
19. McCarthy MI. Genomics, type 2 diabetes, and obesity. *N Engl J Med*. 2010;363(24):2339–2350.
20. Divers J, Freedman BI. Susceptibility genes in common complex kidney disease. *Curr Opin Nephrol Hypertens*. 2010;19(1):79–84.
21. McDonough CW, et al. A genome-wide association study for diabetic nephropathy genes in African Americans. *Kidney Int*. 2011;79(5):563–572.
22. Placha G, Canani LH, Warram JH, Krolewski AS. Evidence for different susceptibility genes for proteinuria and ESRD in type 2 diabetes. *Adv Chronic Kidney Dis*. 2005;12(2):155–169.
23. Sequist ER, Goetz FC, Rich S, Barbosa J. Familial clustering of diabetic kidney disease. Evidence for genetic susceptibility to diabetic nephropathy. *N Engl J Med*. 1989;320(18):1161–1165.
24. Donadio JV, Grande JP. IgA nephropathy. *N Engl J Med*. 2002;347(10):738–748.
25. Gharavi AG, et al. IgA nephropathy, the most common cause of glomerulonephritis, is linked to 6q22-23. *Nat Genet*. 2000;26(3):354–357.
26. Bisceglia L, et al. Genetic heterogeneity in Italian families with IgA nephropathy: suggestive linkage for two novel IgA nephropathy loci. *Am J Hum Genet*. 2006;79(6):1130–1134.
27. Paterson AD, et al. Genome-wide linkage scan of a large family with IgA nephropathy localizes a novel susceptibility locus to chromosome 2q36. *J Am Soc Nephrol*. 2007;18(8):2408–2415.
28. Feehally J, et al. HLA has strongest association with IgA nephropathy in genome-wide analysis. *J Am Soc Nephrol*. 2010;21(10):1791–1797.
29. Gharavi AG, et al. Genome-wide association study identifies susceptibility loci for IgA nephropathy. *Nat Genet*. 2011;43(4):321–327.
30. Gharavi AG, et al. Aberrant IgA1 glycosylation is inherited in familial and sporadic IgA nephropathy. *J Am Soc Nephrol*. 2008;19(5):1008–1014.
31. Beeram I, Novak J, Wyatt RJ, Julian BA, Gharavi AG. The genetics of IgA nephropathy. *Nat Clin Pract Nephrol*. 2007;3(6):325–338.
32. Stanescu HC, et al. Risk HLA-DQA1 and PLA(2)R1 alleles in idiopathic membranous nephropathy. *N Engl J Med*. 2011;364(7):616–626.
33. Segelmark M. Genes that link nephritis to auto-antibodies and innate immunity. *N Engl J Med*. 2011;364(7):679–680.
34. Liu YH, et al. Association of phospholipase A2 receptor 1 polymorphisms with idiopathic membranous nephropathy in Chinese patients in Taiwan. *J Biomed Sci*. 2010;17:81.
35. Kim S, et al. Single nucleotide polymorphisms in the phospholipase A(2) receptor gene are associated with genetic susceptibility to idiopathic membranous nephropathy. *Nephron Clin Pract*. 2010;117(3):c253–c258.
36. Beck LH Jr, et al. M-type phospholipase A2 receptor as target antigen in idiopathic membranous nephropathy. *N Engl J Med*. 2009;361(1):11–21.
37. Foreman-Wykert AK, Weinrauch Y, Elsbach P, Weiss J. Cell-wall determinants of the bactericidal action of group IIA phospholipase A2 against Gram-positive bacteria. *J Clin Invest*. 1999;103(5):715–721.
38. Hanasaki K. Mammalian phospholipase A2: phospholipase A2 receptor. *Biol Pharm Bull*. 2004; 27(8):1165–1167.
39. Humphries SV. A study of hypertension in the Bahamas. *S Afr Med J*. 1957;31(28):694–699.
40. Easterling RE. Racial factors in the incidence and causation of end-stage renal disease (ESRD). *Trans Am Soc Artif Intern Organs*. 1977;23:28–33.
41. Kao WH, et al. MYH9 is associated with nondiabetic end-stage renal disease in African Americans. *Nat Genet*. 2008;40(10):1185–1192.
42. Kopp JB, et al. MYH9 is a major-effect risk gene for focal segmental glomerulosclerosis. *Nat Genet*. 2008;40(10):1175–1184.
43. Winkler CA, Nelson GW, Smith MW. Admixture mapping comes of age. *Annu Rev Genomics Hum Genet*. 2010;11:65–89.
44. Genovese G, et al. Association of trypanolytic *ApoL1* variants with kidney disease in African Americans. *Science*. 2010;329(5993):841–845.
45. Pennisi E. Genomics. 1000 Genomes Project gives new map of genetic diversity. *Science*. 2010; 330(6004):574–575.
46. Tzur S, et al. Missense mutations in the *APOL1* gene are highly associated with end stage kidney disease risk previously attributed to the MYH9



- gene. *Hum Genet.* 2010;128(3):345–350.
47. Leventhal JS, Ross MJ. Pathogenesis of HIV-associated nephropathy. *Semin Nephrol.* 2008;28(6):523–534.
 48. Kopp JB, Winkler C. HIV-associated nephropathy in African Americans. *Kidney Int Suppl.* 2003;(83):S43–S49.
 49. Winston JA, Klotman PE. Are we missing an epidemic of HIV-associated nephropathy? *J Am Soc Nephrol.* 1996;7(1):1–7.
 50. Freedman BI, Spray BJ, Tuttle AB, Buckalew VM Jr. The familial risk of end-stage renal disease in African Americans. *Am J Kidney Dis.* 1993;21(4):387–393.
 51. Fabian J, Naicker S. HIV and kidney disease in sub-Saharan Africa. *Nat Rev Nephrol.* 2009;5(10):591–598.
 52. Behar DM, Shlush LI, Maor C, Lorber M, Skorecki K. Absence of HIV-associated nephropathy in Ethiopians. *Am J Kidney Dis.* 2006;47(1):88–94.
 53. Williams TN. Human red blood cell polymorphisms and malaria. *Curr Opin Microbiol.* 2006;9(4):388–394.
 54. Allison AC. Genetic control of resistance to human malaria. *Curr Opin Immunol.* 2009;21(5):499–505.
 55. Chebloune Y, et al. Structural analysis of the 5' flanking region of the beta-globin gene in African sickle cell anemia patients: further evidence for three origins of the sickle cell mutation in Africa. *Proc Natl Acad Sci U S A.* 1988;85(12):4431–4435.
 56. Jallow M, et al. Genome-wide and fine-resolution association analysis of malaria in West Africa. *Nat Genet.* 2009;41(6):657–665.
 57. Pays E, Vanhollebeke B, Vanhamme L, Paturiaux-Hanocq F, Nolan DP, Perez-Morga D. The trypanolytic factor of human serum. *Nat Rev Microbiol.* 2006;4(6):477–486.
 58. Xong HV, et al. A VSG expression site-associated gene confers resistance to human serum in *Trypanosoma rhodesiense*. *Cell.* 1998;95(6):839–846.
 59. Charlesworth B. Fundamental concepts in genetics: effective population size and patterns of molecular evolution and variation. *Nat Rev Genet.* 2009;10(3):195–205.
 60. Sabeti PC, et al. Detecting recent positive selection in the human genome from haplotype structure. *Nature.* 2002;419(6909):832–837.
 61. Page NM, Butlin DJ, Lomthaisong K, Lowry PJ. The human apolipoprotein L gene cluster: identification, classification, and sites of distribution. *Genomics.* 2001;74(1):71–78.
 62. Smith EE, Malik HS. The apolipoprotein L family of programmed cell death and immunity genes rapidly evolved in primates at discrete sites of host-pathogen interactions. *Genome Res.* 2009;19(5):850–858.
 63. Samanovic M, Molina-Portela MP, Chessler AD, Burleigh BA, Raper J. Trypanosome lytic factor, an antimicrobial high-density lipoprotein, ameliorates *Leishmania* infection. *PLoS Pathog.* 2009;5(1):e1000276.
 64. Campbell MC, Tishkoff SA. African genetic diversity: implications for human demographic history, modern human origins, and complex disease mapping. *Annu Rev Genomics Hum Genet.* 2008;9:403–433.
 65. Wan G, Zhaorigetu S, Liu Z, Kaini R, Jiang Z, Hu CA. Apolipoprotein L1, a novel Bcl-2 homology domain 3-only lipid-binding protein, induces autophagic cell death. *J Biol Chem.* 2008;283(31):21540–21549.
 66. Hartleben B, et al. Autophagy influences glomerular disease susceptibility and maintains podocyte homeostasis in aging mice. *J Clin Invest.* 2010;120(4):1084–1096.
 67. Pays E, Vanhollebeke B. Human innate immunity against African trypanosomes. *Curr Opin Immunol.* 2009;21(5):493–498.